

PEM - 01 B
MULTIFUNCTION POWER METER



MEASURES ALL ELECTRICAL PARAMETERS

PEM - 02
MULTIFUNCTION POWER METER



MEASURES ALL ELECTRICAL PARAMETERS
With HARMONICS

POWER METER : PEM-01 B

APPLICATIONS :

- Helps to reduce the demand and energy charges.
- Helps to optimise the production versus energy consumption.
- Helps for efficient energy savings.
- Supports to improve man-machine efficiency.
- Timely preventive maintenance - saves money.

SALIENT FEATURES :

- True RMS measurements.
- Accurate and Reliable energy measurement of all the loads – linear, nonlinear and unbalanced loads.
- Displays: Voltage, Current, KW (phasewise and total), KVA (phasewise and total), KWHr (phasewise, slotwise and total), Runtime (Slotwise and total), Power factor, Frequency.
- Import / Export facility.
- PT and CT primary Programmable at site.
- RS 485 - MODBUS Communication facility with computer.

FEATURES WITH COMPUTER INTERFACE :

- Continuous measurement and recording facility of all electrical parameters.
- Slotwise Energy, KVAHr with Low PF settings.
- Peak Value Monitoring – Voltage, Current & Power.
- Monitoring of no-load and overload operations.
- Comparison chart helps to understand the machine healthiness.
- Alarm indication when energy level exceeds the set value.
- Downtime recording facility.

MULTIFUNCTION POWER METER : PEM-02

APPLICATIONS :

- Measures all electrical parameters.
- Measures harmonics up to 31st order.
- Reduce energy costs.
- Helps to understand energy utilization of loads.

SALIENT FEATURES :

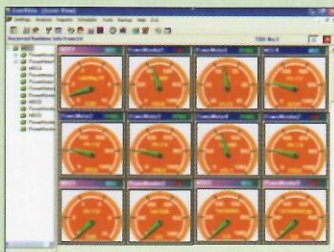
- True RMS measurements.
- Phase sequence adjustment.
- Import / Export facility.
- PT and CT primary Programmable at site.
- Accurate and Reliable energy measurement of all the loads – linear, nonlinear and unbalanced loads.
- Displays: Voltage, Current, Kw (phasewise & total), Kva (Phasewise & total), Kvar (phasewise & total), PF (phasewise & total), Kwhr (Import & Export), Kvarh (Import & Export), Total Kvah, Frequency, Phasewise Voltage and Phasewise current THD, Phasewise THD Graph upto 31st harmonics (Voltage & Current).
- Direct Connect voltage inputs upto 600 volt AC. No need for external potential Transformer (PT).
- Large dot matrix Graphical LCD display with white back-light provides summary screens with multiple values.
- RS 485 - MODBUS communication to conduct group network management and achieve automatic control.
- Upto 31st harmonic analysis, THD Bar chart display of current and voltage harmonics.



TECHNICAL SPECIFICATIONS

PARAMETERS	PEM-01 B	PEM-02
1. AUX.SUPPLY	85V AC - 300V AC	85V AC - 265V or 100V - 300V DC
2. INPUT : VOLTAGE	280V (L-N) / 500V (L-L)	400V (L-N) / 650V (L-L)
CURRENT	1A / 5 A	5A
3. FREQUENCY	45Hz - 55 Hz	35Hz - 65 Hz
4. COMMUNICATION	RS 485 - Modbus-RTU Baudrate : 9600, 19200, 38400	RS 485 - Modbus-RTU Baudrate : 4800, 9600, 19200 bps Address : 1-247
5. DISPLAY	6 Digit 3 Line super bright LED display	Large Dot matrix graphical LCD display
6. ACCURACY	Class 1.0	Class 0.5
7. OVER ALL DIMENSION	96 mm X 96 mm X 100 mm (D)	96 mm X 96 mm X 100 mm (D)
8. CUTOUT	90 mm X 90 mm	90 mm X 90 mm

ENERGY MONITORING SYSTEMS



OTHER PRODUCTS

- ◆ Maximum Demand Controller
- ◆ Online Production Monitoring System for Spinning
- ◆ Production Counter
- ◆ Power Factor Controller
- ◆ Speed Controller for Spinning Machine
- ◆ Power Analyzer



INDUS ELECTRONICS INDIA (P) LTD

Plot No. 3, Electronics Industrial Estate, Civil Aerodrome Post,
Coimbatore - 641 014. INDIA. Phone : 91422 - 2626020, 2628351 Mobile : 94885 94053
E-mail : info@induselect.com, sales@induselect.com Web : www.induselect.com